

MONTHLY MEMBERSHIP PROGRESS REPORT

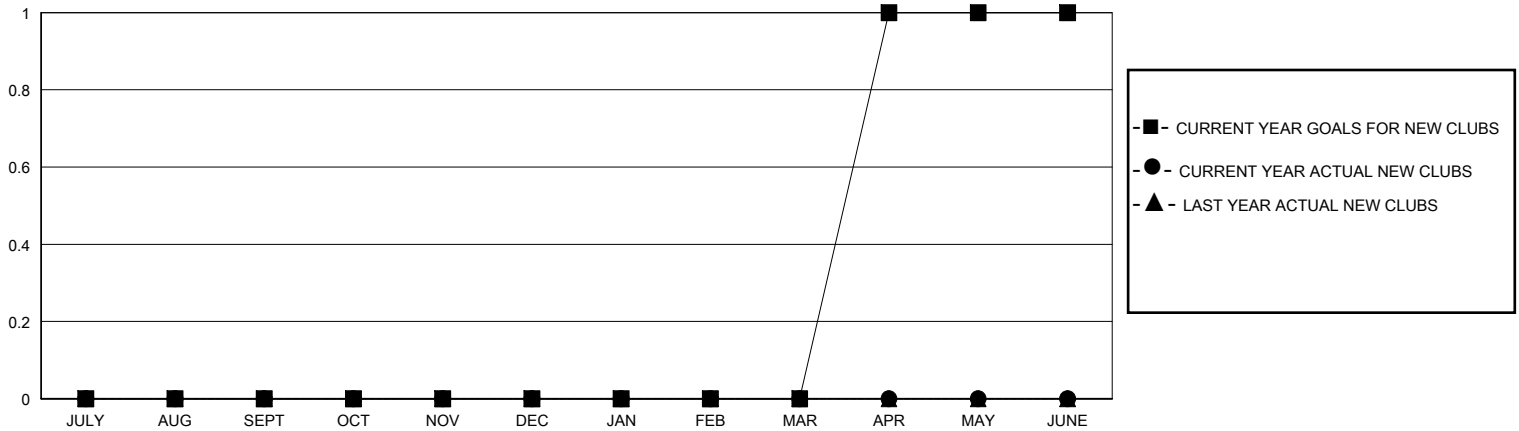
District 11 D1

Results as of: 11/30/2025

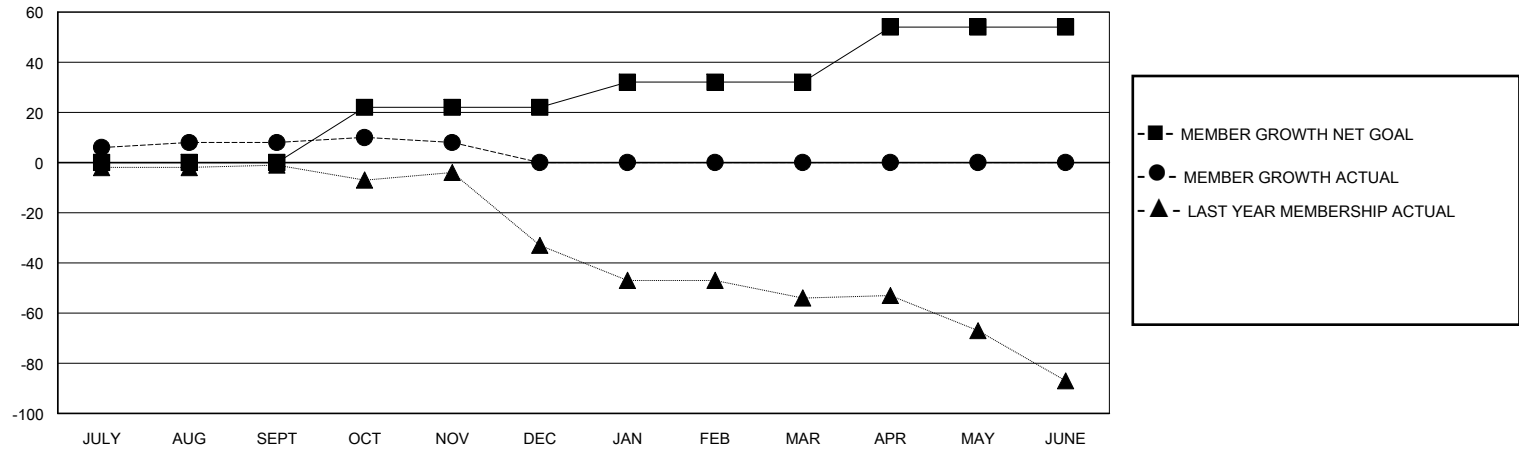
GMT: LOCATION MICHIGAN GMT CA

Clubs				Members			
RESULTS FOR 2025-2026				RESULTS FOR 2025-2026			
QUARTER	NEW CLUB GOAL	NEW CLUBS	DROPPED CLUBS	QUARTER	MEMBER GROWTH NET GOAL	MEMBER GROWTH ACTUAL	DROPPED MEMBERS ACTUAL (including transfers)
JULY/AUG/SEPT	0	0	1	JULY/AUG/SEPT	0	20	9
OCT/NOV/DEC	0	0	0	OCT/NOV/DEC	22	10	10
JAN/FEB/MAR	0	0	0	JAN/FEB/MAR	10	0	0
APR/MAY/JUNE	1	0	0	APR/MAY/JUNE	22	0	0

GOALS AND ACTUAL NEW CLUBS CUMULATIVE



GOALS AND ACTUAL MEMBERS CUMULATIVE



DROPPED CLUBS: 1	11 CLUBS OF 34 ADDED 1 OR MORE NEW MEMBERS	<u>GENDER DISTRIBUTION</u> MALE 586 (67.28%) FEMALE 285 (32.72%)
<u>DROPPED MEMBERS</u> DECEASED 2 CLUB CANCELLED 1 OTHER 16 TOTAL 19	CLICK HERE FOR CUMULATIVE MEMBERSHIP DATA	TOTAL FAMILY UNIT MEMBERS 213 FAMILY MEMBERS PAYING HALF DUES 108